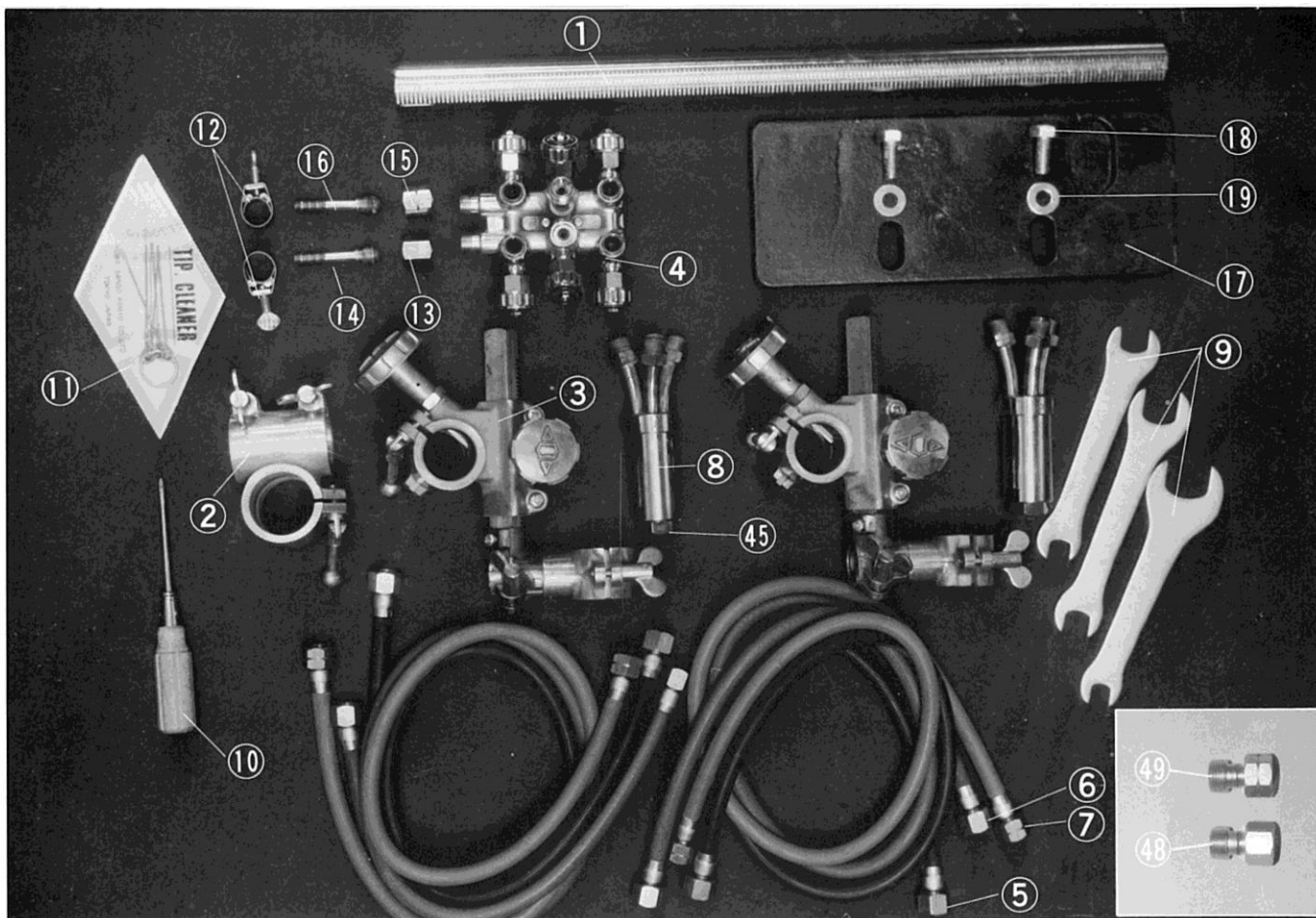


IK-12max3 TORCH S-200



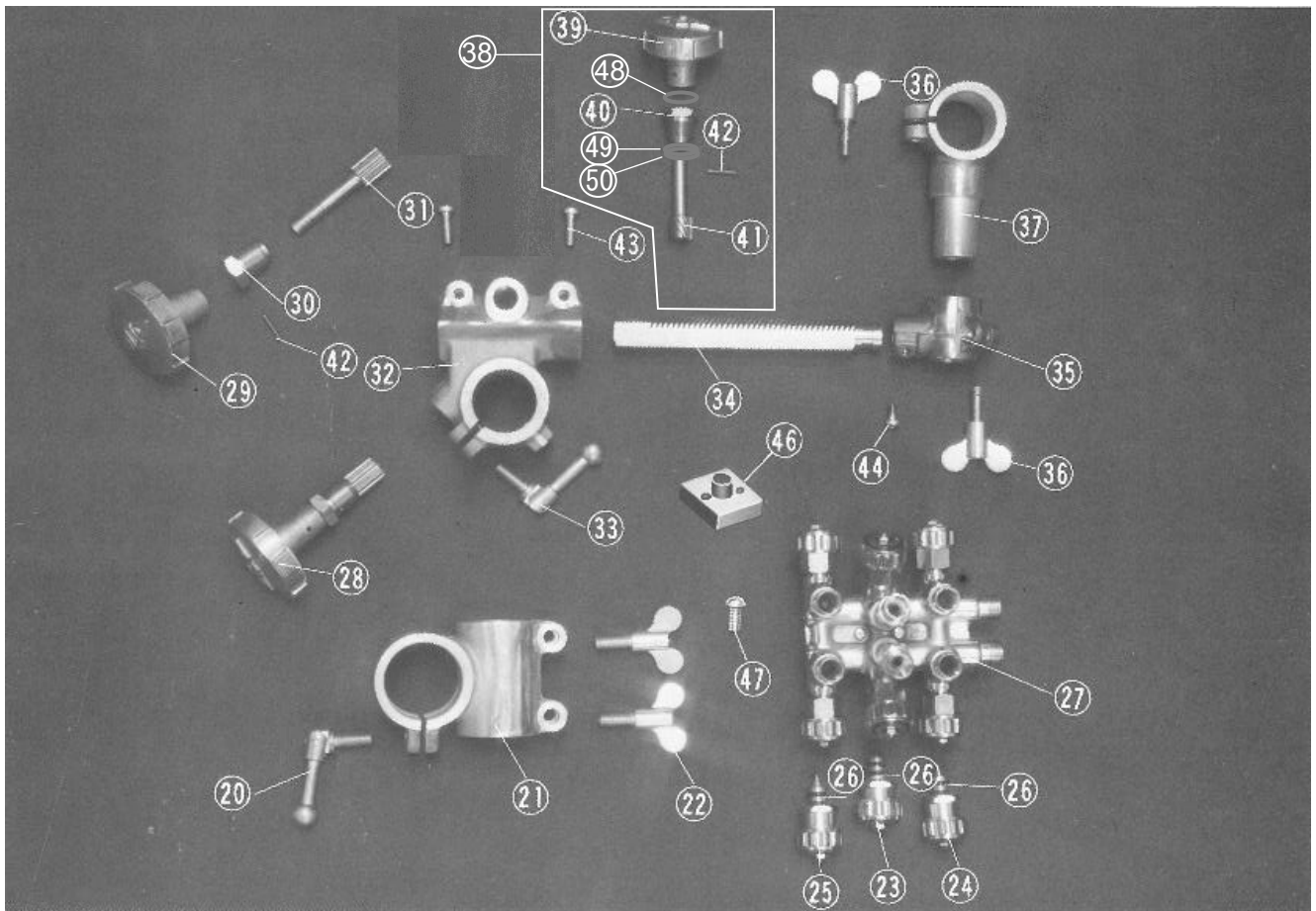
BCD17B02



ITEM No.	PART NAME	Qty	STOCK No.	REMARKS
1	Pipe arm	1	60030321	Standard 500mm
2	Arm holder	1	60030301	
3	Torch holder (B Type)	2	60030302	
4	Distributor	1	60013251	Except USA
	Distributor	(1)	60013252	USA only
	Distributor	(1)	60013256	KE only
5	Hose for jet oxygen	2	60030322	Except USA 900L
	Hose for jet oxygen	(2)	60030323	USA only 900L
	Hose for jet oxygen	(2)	60030324	KE only
6	Hose for preheat oxygen	2	60030324	Except USA 900L
	Hose for preheat oxygen	(2)	60030325	USA only
7	Hose for gas	2	60030326	Except USA
	Hose for gas	(2)	60030327	USA only
8	Torch	2	60010601	Except USA
	Torch	(2)	60010602	USA only
	Torch	(2)	60010606	KE only
9	Spanner	1	60030309	
10	Screw driver	1	60030310	

ITEM No.	PART NAME	Qty	STOCK No.	REMARKS
11	Tip cleaner	1	60030311	
12	Hose band	2	60030312	Except USA
13	Nut for oxygen	1		It varies by country
14	Hose connector for oxygen	1		It varies by country
15	Nut for gas	1		It varies by country
16	Hose connector for gas	1		It varies by country
17	Weight	1	60030346	
18	Hex bolt	2	6C011035	BH-10x35
19	Washer	2	6D500100	WF-10
48	Hose joint	1		It varies by country
49	Hose joint	1		It varies by country

IK-12max3 TORCH S-200



ITEM No.	PART NAME	Qty	STOCK No.	REMARKS
20	Crank handle	1	60030313	M8
21	Bar holder	1	60030314	
22	Wing bolt	2	60030315	
23	Valve for jet oxygen	2	60015251	
		(2)	60015252	KE only ★
24	Valve for preheat oxygen	2	60015255	
		(2)	60015258	KE only ★
25	Valve for gas	2	60015256	
26	O-Ring	6	6E900001	KS-5 ★
28	Cross feed assembly	1	60030316	
29	Handle	1	60030317	φ 50
30	Pinion metal	1	60030318	
31	pinion	1	60030319	
32	Cross feed unit	1	60030320	With key
33	Crank handle	1	60030313	
34	Slide bar	1	60030390	

ITEM No.	PART NAME	Qty	STOCK No.	REMARKS
35	Torch holder bracket	1	60030391	
36	Wing bolt	2	60030392	
37	Torch holder	1	60030393	※
38	Up/down handle assembly	1	60030394	
39	Handle	1	60030223	
40	Pinion metal	1	60030395	
41	Pinion	1	60030396	
42	Spring pin	2	6B022516	PR-2.5x16
43	Screw	2	6C520618	SP-6x18
44	Screw	1	6C520510	SP-5x10
45	Tip fixing nut	1	60005020	
46	Distributor bracket	1	60013305	
47	Screw	2	6C520420	SP-4x20
48	Washer	2	20521750	
49	Wave washer	1	6D530008	WW-8
50	Shim	1	60032329	

※ We have marked a line to match the scale but we do not guarantee accuracy.
Please use this as a guide.
The line is not attached when purchasing individual parts. Mark it when replacing parts.

IK-12max3 TORCH S-200
OPERATION MANUAL

Date of issue :	May.2019
2 nd	Oct.2023
3 rd	Aug.2024
4 th	Oct.2024

KOIKE SANSO KOGYO CO., LTD.

Printed in Japan